

Specifications
Parallel
901180

maharam

Application

Systems, Upholstered Walls

Windows require additional finishes.

Note: For window application, a blackout liner is recommended.

Characteristics

Content: 58% Post-Industrial Recycled Polyester, 42% Post-Consumer Recycled Polyester

Finish: None

Additional Finishes Available: Flame Resistant Finish, Stain Repellent Finish

Backing: None

Width: 66" (168cm)

Bolt Size: 60 yards (55 m)

Weight: 12.9 oz/ly (400 gr/lm)

Country of Origin: USA

Price

\$44.00 / C\$63.00 (FOB destination) / C\$59.50 (FOB origin)

Maintenance

W/S/B-Clean with water-based cleanser; mild, water-free dry cleaning solvent, or diluted household bleach.



Testing

Acoustics: ASTM C423, 0.75 NRC

Flammability: AS/NZS 3837 Unadhered

ASTM E84 Adhered*

ASTM E84 Unadhered

CAN ULC S102 Unadhered

GB 8624 Unadhered*

NFPA 701*

*passes with additional treatment

Lightfastness: AATCC 16.3, 40+ hours



Specifications

Parallel

901180

maharam

Environmental

Greenguard Gold Certified

Healthier Hospitals Compliant

LBC Red List Free

Contains Recycled Content

FR Free

Free of Intentionally Added PFAS

Warranty

3 years.

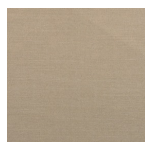
© 2022 Maharam

Complete product information at maharam.com

800.645.3943



002 Argent



003 Fog



023 Linen



024 Pea



027 Boulder



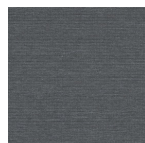
028 Steam



029 Shiitake



032 Brandy



033 Crater



036 Quail