

Specifications

Clove

650163

maharam

Application

Floors

Characteristics

Content: 60% Wool, 21% Post-Industrial Recycled Cotton, 19% Mixed Post-Industrial Recycled Fibers

Construction: Hand Knotted

Backing: None

Maximum Width: 10' (305cm)

Maximum Length: 10' (305cm)

Size variation: +/- 5%

Height: 3/4" (18mm)

Weight: 15.7 oz/sq ft (4800 g/sq m)

Traffic: High-Suitable for most heavy duty applications. Not appropriate for stairway or corridor applications or for use with casters.

Country of Origin: India

Note: Variations in color and texture are inherent to this textile.

Price

\$65.00 / C\$88.00 per square foot (FOB origin)

Maintenance

X-Vacuum or brush lightly to remove surface dust.

☒ ☒ ☒ ☒ ☒

Testing

Lightfastness: AATCC 16.3, 40+ hours

Specifications
Clove
650163

maharam

Environmental

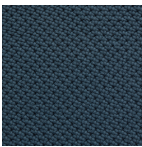
LBC Red List Free
Contains Bio-Based Content
Contains Recycled Content
FR Free
Free of Intentionally Added PFAS

Warranty

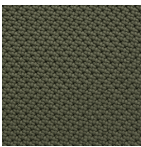
2 years.

© 2023 Maharam

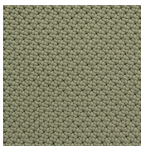
Complete product information at maharam.com
800.645.3943



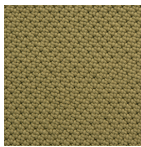
001 Marine



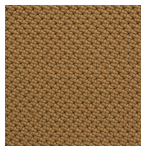
002 Leaf



003 Matcha



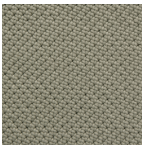
004 Begonia



005 Copper



006 Bamboo



007 Peak



008 Transistor