

Specifications

Channel

650159

maharam

Application

Floors

Characteristics

Content: 100% Wool

Construction: Handwoven

Backing: None

Maximum Width: 18' (549cm)

Maximum Length: 20' (610cm)

Size variation: +/- 5%

Height: 1/4" (6mm)

Weight: 5.9 oz/sq ft (1800 g/sq m)

Traffic: High-Suitable for most heavy duty applications. Not appropriate for stairway or corridor applications or for use with casters.

Country of Origin: India

Note: Variations in color and texture are inherent to this textile.

Price

\$56.50 / C\$80.75 per square foot (FOB origin)

Maintenance

X-Vacuum or brush lightly to remove surface dust.

☒ ☒ ☒ ☒ ☒

Testing

Flammability: ASTM D2859/CPSC FF 1-70/FF 2-70/16 CFR1630

Lightfastness: AATCC 16.3, 40+ hours

Specifications
Channel
650159

maharam

Environmental

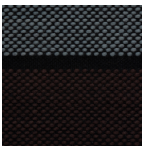
LBC Red List Free
REACH Compliant
Contains Bio-Based Content
FR Free
Free of Intentionally Added PFAS

Warranty

2 years.

© 2023 Maharam

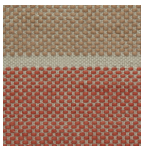
Complete product information at maharam.com
800.645.3943



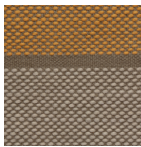
001 Range



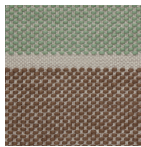
002 Currant



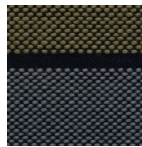
003 Sandstone



004 Solar



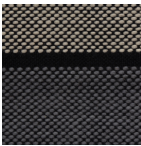
005 Pistachio



006 Anagama



007 Lure



008 Summit