

Specifications

Isle

650151

maharam

Application

Floors

Characteristics

Content: 90% Wool, 10% Organic Cotton

Construction: Handwoven

Backing: None

Maximum Width: 16' (488cm)

Maximum Length: 50' (1524cm)

Size variation: +/- 5%

Height: 3/8" (10mm)

Weight: 8.8 oz/sq ft (2700 g/sq m)

Traffic: Moderate-Suitable for most applications with the exception of high traffic stairways, corridors, public waiting areas, or for use with casters.

Country of Origin: India

Note: Variations in color and texture are inherent to this textile.

Price

\$55.00 / C\$74.50 per square foot (FOB origin)

Maintenance

X-Vacuum or brush lightly to remove surface dust.



Testing

Flammability: ASTM D2859 / CPSC FF 1-70 / FF 2-70, 16 CFR 1630

ASTM E648 / NFPA 253 OVER RUG PAD THIN

Lightfastness: AATCC 16.3, 40+ hours

Specifications

Isle

650151

maharam

Environmental

GRS Certified Content

Healthier Hospitals Compliant

LBC Red List Free

Contains Bio-Based Content

FR Free

Free of Intentionally Added PFAS

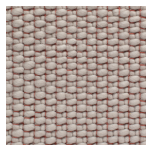
Warranty

2 years.

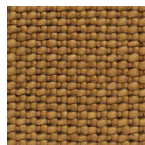
© 2024 Maharam

Complete product information at maharam.com

800.645.3943



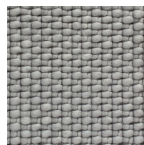
001 Poppy



002 Plumeria



003 Orca



004 Caldera



005 Keel



006 Faraway