

Specifications  
Hustle  
by Bertjan Pot  
650133

**maharam**

**Application**

Floors

**Characteristics**

Content: 90% Wool, 10% Organic Cotton

Construction: Handwoven

Backing: None

Maximum Width: 16' (487cm)

Maximum Length: 50' (1524cm)

Size variation: +/- 5%

Height: 1/4" (7mm)

Weight: 8.2 oz/sq ft (2500 g/sq m)

Traffic: High-Suitable for most heavy duty applications. Not appropriate for stairway or corridor applications or for use with casters.

Country of Origin: India

Note: Variations in color and texture are inherent to this textile.

**Price**

\$45.00 / C\$61.00 per square foot (FOB origin)

**Maintenance**

X-Vacuum or brush lightly to remove surface dust.

**Testing**

Flammability: ASTM D 2859 / CPSC FF 1-70 / FF 2-70, 16 CFR 1630

ASTM E 648 / NFPA 253 OVER RUG PAD THIN

Lightfastness: AATCC 16.3, 40+ hours

Specifications  
Hustle  
by Bertjan Pot  
650133

**maharam**

**Environmental**

LBC Red List Free

Contains Bio-Based Content

FR Free

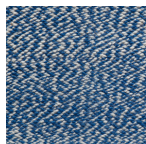
Free of Intentionally Added PFAS

**Warranty**

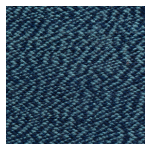
2 years.

© 2022 Maharam

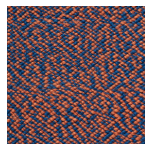
Complete product information at [maharam.com](https://maharam.com)  
800.645.3943



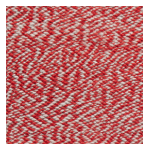
001 Trill



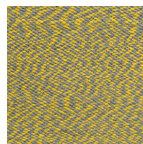
002 Stir



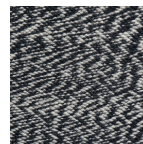
003 Wiggle



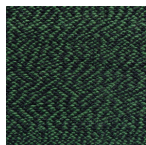
004 Jolly



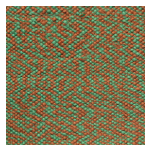
005 Flash



006 Zag



007 Weld



008 Tremble