

Specifications

Kent

650131

maharam

Application

Floors

Characteristics

Content: 85% Wool, 15% Polyester

Construction: Flat Woven

Backing: Jute / Latex

Maximum Width: 13' 2" (400cm)

Maximum Length: 98' 5" (3000cm)

Size variation: +/- 5%

Height: 1/4" (7mm)

Bolt Size: 33 yards (30 m)

Weight: 8.8 oz/sq ft (2700 g/sq m)

Traffic: High-Suitable for all heavy duty applications.

Country of Origin: Belgium

Note: Variations in color and texture are inherent to this textile.

Price

Product is sized and priced on a project-specific basis

Maintenance

X-Vacuum or brush lightly to remove surface dust.



Testing

Flammability: ASTM D2859 / CPSC FF 1-70 / FF 2-70, 16 CFR 1630

ASTM E648/NFPA 253

Lightfastness: AATCC 16.3, 40+ hours

Specifications

Kent

650131

maharam

Environmental

LBC Red List Free

Contains Bio-Based Content

FR Free

Free of Intentionally Added PFAS

Warranty

2 years.

© 2021 Maharam

Complete product information at maharam.com

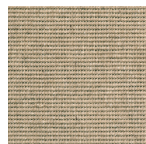
800.645.3943



001 Eden



002 Awash



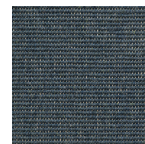
003 Ladder



004 Laurel



005 Bridle



006 Pillar



007 Ligature