

Specifications

Element

by Scholten & Baijings

650111

maharam

Application

Floors

Characteristics

Content: 90% Wool, 10% Rayon

Construction: Handwoven

Backing: None

Maximum Width: 13' 2" (400cm)

Maximum Length: 32' 10" (1000cm)

Size variation: +/- 5%

Height: 3/8" (11mm)

Class: Type II

Weight: 6.1 oz/sq ft (1800 g/sq m)

Traffic: Moderate-Suitable for most applications with the exception of high traffic stairways, corridors, public waiting areas, or for use with casters.

Country of Origin: India

Note: Variations in color and texture are inherent to this textile.

Price

\$63.00 / C\$85.25 per square foot (FOB origin)

Maintenance

X-Vacuum or brush lightly to remove surface dust.

☒ ☒ ☒ ☒ ☒

Testing

Flammability: ASTM D2859 / CPSC FF 1-70 / FF 2-70, 16 CFR 1630

ASTM E648 / NFPA 253 OVER RUG PAD THIN

ASTM E648/NFPA 253

Specifications
Element
by Scholten & Baijings
650111

maharam

Environmental

LBC Red List Free

Contains Bio-Based Content

Produced in an ISO 14001 Facility

FR Free

Free of Intentionally Added PFAS

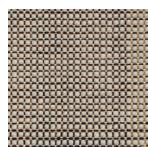
Warranty

2 years.

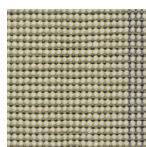
© 2019 Maharam

Complete product information at maharam.com

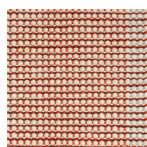
800.645.3943



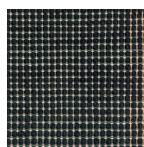
180



410



550



970