

## Specifications

### Query

650095

**maharam**

#### Application

Floors

#### Characteristics

Content: 100% Wool

Construction: Woven Wilton

Backing: Jute / Polyester / Latex

Maximum Width: 12' (366cm)

Size variation: +/- 5%

Height: 3/8" (10mm)

Bolt Size: 30 yards (27 m)

Weight: 10.3 oz/sq ft (3100 g/sq m)

Traffic: High-Suitable for all heavy duty applications.

Country of Origin: USA

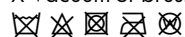
Note: Variations in color and texture are inherent to this textile.

#### Price

Product is sized and priced on a project-specific basis

#### Maintenance

X-Vacuum or brush lightly to remove surface dust.



#### Testing

Flammability: ASTM D2859/CPSC FF 1-70/FF 2-70/16 CFR1630

JFRA 45°

Lightfastness: AATCC 16.3, 40+ hours

**Environmental**

LBC Red List Free  
Contains Bio-Based Content  
FR Free  
Free of Intentionally Added PFAS

**Warranty**

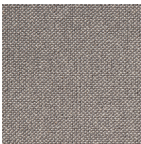
2 years.

© 2019 Maharam

Complete product information at [maharam.com](http://maharam.com)  
800.645.3943



001 Estate



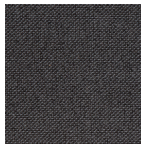
002 Walkway



003 Herd



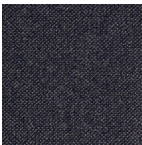
004 Molasses



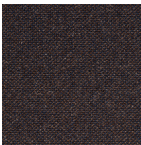
005 Ponder



006 Static



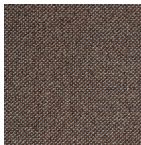
007 Vessel



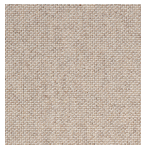
008 Tread



009 Chocolate



010 Brunette



011 Daylight