

Specifications

Lattice by Hella Jongerius

650080

maharam

Application

Floors

Characteristics

Content: 75% Wool, 25% Cotton

Construction: Handwoven

Backing: None

Maximum Width: 9' 10" (300cm)

Maximum Length: 13' 2" (400cm)

Size variation: +/- 5%

Height: 3/8" (10mm)

Weight: 7.2 oz/sq ft (2200 g/sq m)

Traffic: Moderate-Suitable for most applications with the exception of high traffic stairways, corridors, public waiting areas, or for use with casters.

Country of Origin: India

Note: Variations in color and texture are inherent to this textile.

Price

\$68.50 / C\$92.75 per square foot (FOB origin)

Maintenance

X-Vacuum or brush lightly to remove surface dust.



Testing

Flammability: ASTM D2859 / CPSC FF 1-70 / FF 2-70, 16 CFR 1630

ASTM E648 / NFPA 253 OVER RUG PAD THIN

Specifications

Lattice by Hella Jongerius

650080

maharam

Environmental

LBC Red List Free

Contains Bio-Based Content

Produced in an ISO 14001 Facility

FR Free

Free of Intentionally Added PFAS

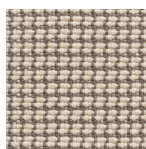
Warranty

2 years.

© 2018 Maharam

Complete product information at maharam.com

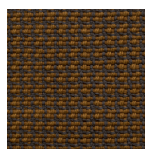
800.645.3943



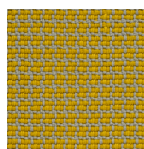
120



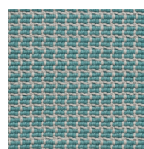
190



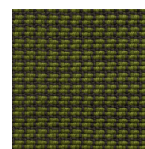
270



410



760



920