

# Specifications

## Duotone by Hella Jongerius

### 650004

**maharam**

#### Application

Floors

#### Characteristics

Content: 100% Wool

Construction: Handwoven

Backing: None

Maximum Width: 11' 6" (350cm)

Maximum Length: 39' 4" (1200cm)

Size variation: +/- 5%

Height: ¼" (5mm)

Weight: 5.2 oz/sq ft (1600 g/sq m)

Traffic: Moderate-Suitable for most applications with the exception of high traffic stairways, corridors, public waiting areas, or for use with casters.

Country of Origin: India

Note: Variations in color and texture are inherent to this textile.

#### Price

\$65.50 / C\$88.75 per square foot (FOB origin)

#### Maintenance

X-Vacuum or brush lightly to remove surface dust.

☒ ☒ ☒ ☒ ☒

#### Testing

Flammability: ASTM D2859 / CPSC FF 1-70 / FF 2-70, 16 CFR 1630

ASTM E648 / NFPA 253 OVER RUG PAD THIN

ASTM E648/NFPA 253

JFRA 45°

Lightfastness: AATCC 16.3, 40+ hours

Specifications  
Duotone by Hella Jongerius  
650004

**maharam**

**Environmental**

LBC Red List Free

Contains Bio-Based Content

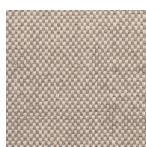
Free of Intentionally Added PFAS

**Warranty**

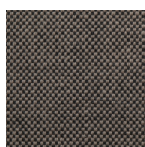
2 years.

© 2014 Maharam

Complete product information at [maharam.com](http://maharam.com)  
800.645.3943



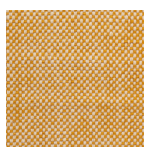
151



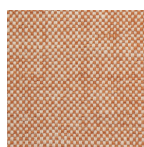
181



191



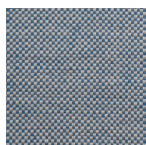
441



511



721



741