

# Specifications

Apex  
466593

**maharam**

## Application

Seating, Outdoor Seating, Upholstered Walls

## Characteristics

Content: 100% Solution-Dyed Polyolefin

Finish: None

Additional Finishes Available: Alta, Alta Food and Beverage, Nanotex, Nanotex with Impermeable Barrier, Stain Repellent Finish

Backing: None

Width: 54" (137cm)

Repeat: 28 1/4" V, 3/4" H (72cm V, 2cm H)

Railroaded Repeat: 3/4" V, 28 1/4" H (2cm V, 72cm H)

Bolt Size: 60 yards (55 m)

Weight: 9.8 oz/ly (304 gr/lm)

Country of Origin: USA

Note: Shown railroaded. Reversible.

## Price

\$72.00 / C\$106.50 (FOB destination) / C\$103.00 (FOB origin)

## Maintenance

W/S/B-Clean with water-based cleanser; mild, water-free dry cleaning solvent, or diluted household bleach.

☒ △ ☒ ☒ Ⓢ

## Testing

Abrasion: ASTM D4157, 100,000 Double Rubs

Note: Abrasion test results exceeding ACT Performance Guidelines are not an indicator of product lifespan.

Multiple factors affect fabric durability and appearance retention.

Flammability: ASTM E84 Unadhered

BS 5852 Crib 5\*

CAL 117-2013

EN 1021-1\*

EN 1021-2\*

GB/T 17591

\*passes with additional treatment

Lightfastness: AATCC 169, 1,500+ hours

☒ ☀ ☒ ☒ ☆

## Specifications

Apex

466593

**maharam**

### Environmental

Greenguard Gold Certified

LBC Red List Free

REACH Compliant

Solution-Dyed Textile

FR Free

Free of Intentionally Added PFAS

### Warranty

5 years.

Warranty for outdoor application applies to color loss and fiber strength only. See Terms and Conditions for more information.

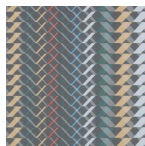
© 2022 Maharam

Complete product information at [maharam.com](https://maharam.com)

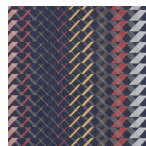
800.645.3943



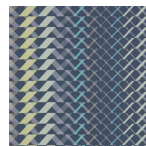
009 Croton



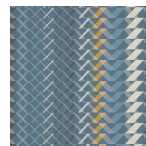
010 Clever



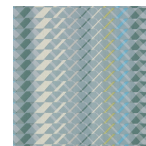
011 Firepit



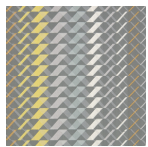
012 Resort



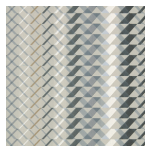
013 Splendor



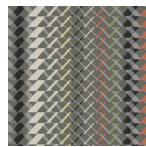
014 Turtle



015 Plantain



016 Snowflake



017 Spectator



018 Lamplit