

Specifications

Linden

466537

maharam

Application

Seating

Note: This textile is available as a made-to-order pillow.

Characteristics

Content: 61% Polyester, 19% Rayon, 16% Acrylic, 4% Wool

Finish: Stain Repellent

Additional Finishes Available: Alta, Alta Food and Beverage, Nanotex, Nanotex with Impermeable Barrier

Backing: Acrylic

Width: 55" (140cm)

Repeat: 17 3/4" V, 14 1/4" H (45cm V, 36cm H), Suitable for non-match application

Bolt Size: 27 yards (25 m)

Weight: 25 oz/ly (775 gr/lm)

Country of Origin: Turkey

Price

\$75.00 / C\$110.75 (FOB destination) / C\$107.25 (FOB origin)

Maintenance

W-Clean with water-based cleanser.

☒ ☒ ☒ ☒ Ⓜ

Testing

Abrasion: ASTM D4157, 90,000 double rubs Wyzenbeek

Note: Abrasion test results exceeding ACT Performance Guidelines are not an indicator of product lifespan.

Multiple factors affect fabric durability and appearance retention.

Flammability: AS/NZS 3837 Unadhered

BS 5852 Crib 5*

CAL 117-2013

EN 1021-1*

EN 1021-2*

ISO 5660 Unadhered

*passes with additional treatment

Lightfastness: AATCC 16.3, 40+ hours

A ☀ 🔥 💧 ☆

Specifications

Linden

466537

maharam

Environmental

Greenguard Gold Certified

Oeko-Tex Certified

REACH Compliant

Contains Bio-Based Content

FR Free

Warranty

3 years.

© 2020 Maharam

Complete product information at maharam.com

800.645.3943



001 Glimpse



002 Trattoria



003 Julep



004 Shamrock



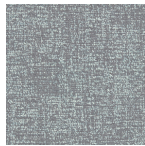
005 Symphony



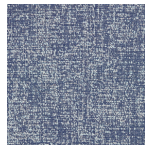
006 Hygge



007 Excursion



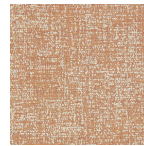
008 Vantage



009 Bewitch



010 Empress



011 Cavalry