

Specifications  
Shift  
by Scholten & Baijings  
466527

**maharam**

**Application**

Seating

Note: This textile is available as a made-to-order pillow.

**Characteristics**

Content: 66% Cotton, 20% Solution-Dyed Nylon, 14% Polyester

Finish: Stain Repellent

Additional Finishes Available: Alta, Alta Food and Beverage, Nanotex, Nanotex with Impermeable Barrier

Backing: Acrylic

Width: 54" (137cm)

Repeat: 15 3/4" V, 1/2" H (40cm V, 1cm H)

Bolt Size: 30 yards (27 m)

Weight: 23.6 oz/ly (732 gr/lm)

Country of Origin: USA

**Price**

\$117.00 / C\$170.75 (FOB destination) / C\$167.25 (FOB origin)

**Maintenance**

S-Clean with mild, water-free dry cleaning solvent.

☒ ☒ ☒ ☒ ☐

**Testing**

Abrasion: ASTM D4157, 100,000 double rubs Wyzenbeek

Note: Abrasion test results exceeding ACT Performance Guidelines are not an indicator of product lifespan.

Multiple factors affect fabric durability and appearance retention.

Flammability: BS 5852 Crib 5\*

CAL 117-2013

EN 1021-1\*

EN 1021-2\*

\*passes with additional treatment

Lightfastness: AATCC 16.3, 40+ hours

☐ ☀ 🔥 💧 ☆

Specifications  
Shift  
by Scholten & Baijings  
466527

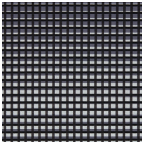
**maharam**

**Environmental**  
Greenguard Gold Certified  
REACH Compliant  
Contains Bio-Based Content  
FR Free

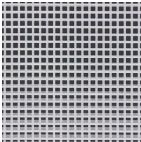
**Warranty**  
3 years.

© 2020 Maharam

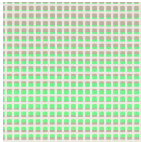
Complete product information at [maharam.com](https://maharam.com)  
800.645.3943



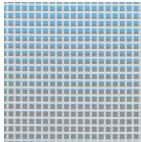
001 Pitch



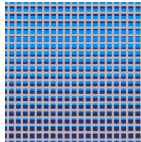
002 Pewter



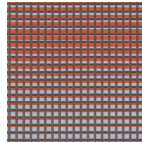
003 Acid



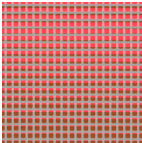
004 Sphere



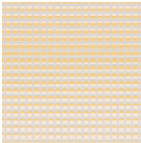
005 Azure



006 Copper



007 Laser



008 Straw