

Specifications

Mantle

466517

maharam

Application

Seating, Upholstered Walls

Note: This textile is available as a made-to-order pillow.

Characteristics

Content: 59% Post-Consumer Recycled Polyester, 37% Polyester, 4% Spandex

Finish: Stain Repellent

Additional Finishes Available: Alta, Alta Food and Beverage, Crypton, Nanotex, Nanotex with Impermeable Barrier

Backing: None

Width: 54" (137cm)

Bolt Size: 35 yards (32 m)

Weight: 24.9 oz/ly (772 gr/lm)

Country of Origin: USA

Price

Contact your sales representative for pricing.

Maintenance

W/S-Clean with water-based cleanser or mild, water-free dry cleaning solvent.



Testing

Abrasion: ASTM D4157, 100,000 double rubs Wyzenbeek

Note: Abrasion test results exceeding ACT Performance Guidelines are not an indicator of product lifespan.

Multiple factors affect fabric durability and appearance retention.

Acoustics: ASTM C423, 0.75 NRC

Flammability: AS/NZS 3837 Unadhered

ASTM E84 Unadhered

BS 5852 Crib 5*

CAL 117-2013

EN 1021-1*

EN 1021-2*

EN 13501 Unadhered*

GB/T 17591*

ISO 5660 Unadhered

*passes with additional treatment

Lightfastness: AATCC 16.3, 40+ hours



Specifications

Mantle

466517

maharam

Environmental

Greenguard Gold Certified

GRS Certified Content

REACH Compliant

Contains Recycled Content

FR Free

Warranty

3 years: Indoor Seating

3 years: Upholstered Walls.

© 2019 Maharam

Complete product information at maharam.com

800.645.3943



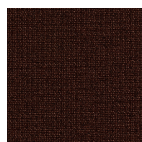
001 Pavement



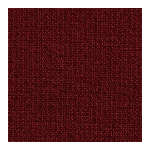
002 Future



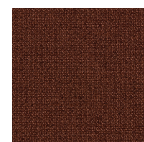
003 Piper



004 Manifesto



005 Mapo



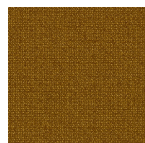
006 Redwood



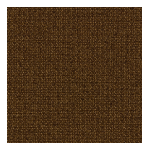
007 Rocky



008 Impala



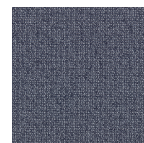
009 Warbler



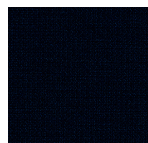
010 Guild



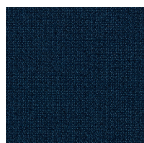
011 Kinetic



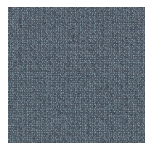
012 Behold



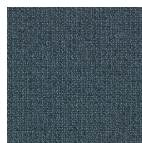
013 Orb



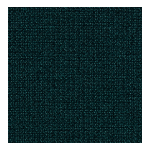
014 Sport



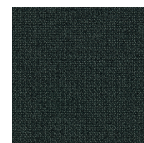
015 Utopia



016 True



017 Galore



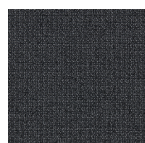
018 Parsley



019 Dare



020 Branzino



021 Network



022 Standard



023 Salamander



024 Oscillate