

# Specifications

## Switch

466515

**maharam**

### Application

Seating, Upholstered Walls

Note: This textile is available as a made-to-order pillow.

### Characteristics

Content: 100% Polyester

Finish: None

Additional Finishes Available: Alta, Alta Food and Beverage, Nanotex, Nanotex with Impermeable Barrier, Stain Repellent Finish

Backing: None

Width: 55" (140cm)

Bolt Size: 44 yards (40 m)

Country of Origin: Germany

Note: Weight varies on a color level. Repeat varies on a color level.

### Price

\$64.00 / C\$90.00 (FOB destination) / C\$86.50 (FOB origin)

### Maintenance

W/S/B-Clean with water-based cleanser; mild, water-free dry cleaning solvent, or diluted household bleach.



### Testing

Abrasion: ASTM D4157, 85,000 double rubs Wyzenbeek

Note: Abrasion test results exceeding ACT Performance Guidelines are not an indicator of product lifespan.

Multiple factors affect fabric durability and appearance retention.

Flammability: ASTM E84 Unadhered

CAL 117-2013

EN 13501 Unadhered\*

\*passes with additional treatment

Lightfastness: AATCC 16.3, 40+ hours



# Specifications

Switch

466515

**maharam**

## Environmental

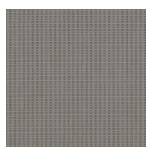
Greenguard Gold Certified  
Healthier Hospitals Compliant  
LBC Red List Free  
REACH Compliant  
Produced in an ISO 14001 Facility  
FR Free  
Free of Intentionally Added PFAS

## Warranty

3 years: Indoor Seating  
3 years: Upholstered Walls.

© 2019 Maharam

Complete product information at [maharam.com](http://maharam.com)  
800.645.3943



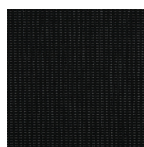
001 Edge



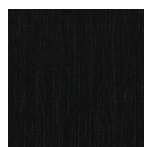
002 Titanium



004 Asteroid



005 Decibel



006 Potent



007 Secret