

Specifications

Etch

by Hella Jongerius

466502

maharam

Application

Seating

Note: This textile is available as a made-to-order pillow.

Characteristics

Content: 49% Rayon, 28% Post-Industrial Recycled Nylon, 23% Cotton

Finish: Stain Repellent

Additional Finishes Available: Alta Food and Beverage, Crypton, Nanotex, Nanotex with Impermeable Barrier

Backing: Acrylic

Width: 54" (137cm)

Repeat: 28 3/4" V, 27 1/2" H (73cm V, 70cm H)

Bolt Size: 45 yards (41 m)

Weight: 18.8 oz/ly (583 gr/lm)

Country of Origin: USA

Price

\$126.00 / C\$174.00 (FOB destination) / C\$170.50 (FOB origin)

Maintenance

S-Clean with mild, water-free dry cleaning solvent.

☒ ☒ ☒ ☒ Ⓟ

Testing

Abrasion: ASTM D4157, 100,000 double rubs Wyzenbeek

Note: Abrasion test results exceeding ACT Performance Guidelines are not an indicator of product lifespan.

Multiple factors affect fabric durability and appearance retention.

Flammability: AS/NZS 1530.3

BS 5852 Crib 5*

CAL 117-2013

EN 1021-1*

EN 1021-2*

*passes with additional treatment

Lightfastness: AATCC 16.3, 40+ hours

☐ ☀ 🔥 💧 ☆

Specifications
Etch
by Hella Jongerius
466502

maharam

Environmental

Greenguard Gold Certified
REACH Compliant
Contains Bio-Based Content
Contains Recycled Content
FR Free

Warranty

3 years.

© 2019 Maharam

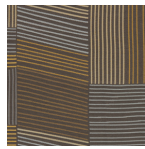
Complete product information at maharam.com
800.645.3943



001 Rosewood



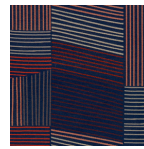
002 Ochre



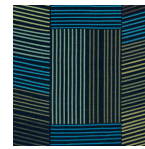
003 Durum



004 Mulberry



005 Hickory



006 Spruce