

# Specifications

Croft

466498

**maharam**

## Application

Seating

Note: This textile is intended for residential use. This textile is available as a made-to-order pillow.

## Characteristics

Content: 52% Linen, 42% Wool, 6% Nylon

Finish: None

Additional Finishes Available: Alta, Alta Food and Beverage, Nanotex, Nanotex with Impermeable Barrier, Stain Repellent Finish

Backing: None

Width: 54" (137cm)

Bolt Size: 11 yards (10 m)

Weight: 46.6 oz/ly (1444 gr/lm)

Country of Origin: Belgium

## Price

\$275.00 / C\$375.25 (FOB destination) / C\$371.75 (FOB origin)

## Maintenance

S-Clean with mild, water-free dry cleaning solvent.



## Testing

Abrasion: ASTM D4966, 30,000 cycles Martindale

Flammability: CAL 117-2013



# Specifications

Croft

466498

**maharam**

## **Environmental**

Healthier Hospitals Compliant

LBC Red List Free

Contains Bio-Based Content

FR Free

Free of Intentionally Added PFAS

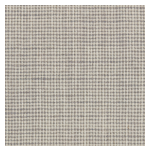
## **Warranty**

None.

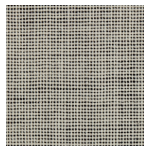
© 2019 Maharam

Complete product information at [maharam.com](http://maharam.com)

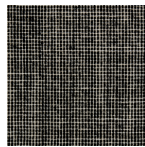
800.645.3943



001 Barefoot



002 Scribe



003 Indulge