

Specifications

Conduit

466428

maharam

Application

Seating, Upholstered Walls

Characteristics

Content: 100% Polyester

Finish: Stain Repellent

Additional Finishes Available: Alta, Alta Food and Beverage, Antimicrobial Stain Resistant Finish with Impermeable Backing, Crypton, Nanotex, Nanotex with Impermeable Barrier

Backing: Acrylic

Width: 58" (147cm)

Repeat: 11 ¼" V, 14 ½" H (29cm V, 37cm H), Suitable for non-match application

Bolt Size: 30 yards (27 m)

Weight: 16.8 oz/ly (519 gr/lm)

Country of Origin: USA

Price

\$49.00 / C\$69.75 (FOB destination) / C\$66.25 (FOB origin)

Maintenance

W/S/B-Clean with water-based cleanser; mild, water-free dry cleaning solvent, or diluted household bleach.

☒ △ ☒ ☒ Ⓜ

Testing

Abrasion: ASTM D4157, 100,000 double rubs Wyzenbeek

Note: Abrasion test results exceeding ACT Performance Guidelines are not an indicator of product lifespan.

Multiple factors affect fabric durability and appearance retention.

Flammability: ASTM E84 Unadhered

BS 5852 Crib 5*

CAL 117-2013

CAN ULC S102 Unadhered

EN 1021-1*

EN 1021-2*

EN 13501 Unadhered*

GB/T 17591*

*passes with additional treatment

Lightfastness: AATCC 16.3, 40+ hours

☒ ☀ ☒ ☒ ☒

Specifications

Conduit

466428

maharam

Environmental

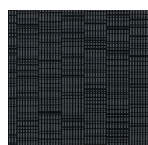
Greenguard Gold Certified
FR Free

Warranty

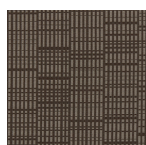
5 years: Indoor Seating
3 years: Upholstered Walls.

© 2017 Maharam

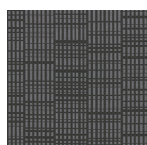
Complete product information at maharam.com
800.645.3943



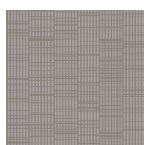
001 Space



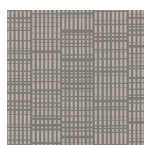
002 Syrup



003 Nimbus



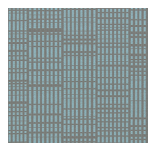
004 Greystone



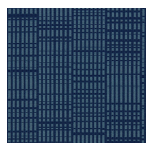
005 Fawn



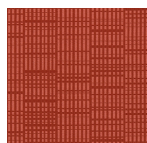
006 Ghost



007 Caribbean



008 Canal



009 Bonfire