

Specifications

Swathe

466416

maharam

Application

Seating

Note: This textile is intended for residential use. This textile is available as a made-to-order pillow.

Characteristics

Content: 55% Rayon, 23% Linen, 15% Polyester, 7% Acrylic

Finish: Silicone

Additional Finishes Available: Alta, Alta Food and Beverage, Nanotex, Nanotex with Impermeable Barrier,

Stain Repellent Finish

Backing: Acrylic

Width: 55" (140cm)

Bolt Size: 27 yards (25 m)

Weight: 22.9 oz/ly (711 gr/lm)

Country of Origin: Germany

Price

\$108.00 / C\$149.50 (FOB destination) / C\$146.00 (FOB origin)

Maintenance

S-Clean with mild, water-free dry cleaning solvent.

☒ ☒ ☒ ☒ ☒

Testing

Abrasion: ASTM D4157, 25,000 double rubs Wyzenbeek

Note: This textile does not meet flammability requirements for contract use without the use of a CAL 117 compliant barrier material.



Specifications

Swathe

466416

maharam

Environmental

Healthier Hospitals Compliant

LBC Red List Free

REACH Compliant

Contains Bio-Based Content

FR Free

Free of Intentionally Added PFAS

Warranty

None.

© 2018 Maharam

Complete product information at maharam.com

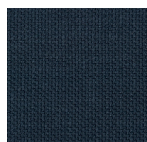
800.645.3943



001 Lining



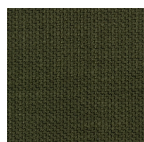
002 Lucid



003 Pour



004 Grey



005 Jungle