

Specifications

Inlay

by Hella Jongerius

466353

maharam

Application

Seating

Note: This textile is available as a made-to-order pillow.

Characteristics

Content: 80% Cotton, 20% Nylon

Finish: Stain Repellent

Additional Finishes Available: Alta, Alta Food and Beverage, Nanotex, Nanotex with Impermeable Barrier

Backing: Acrylic

Width: 52" (132cm)

Repeat: 8" V, 27 ¼" H (20cm V, 69cm H)

Bolt Size: 30 yards (27 m)

Weight: 19.3 oz/ly (599 gr/lm)

Country of Origin: USA

Price

\$126.00 / C\$174.00 (FOB destination) / C\$170.50 (FOB origin)

Maintenance

S-Clean with mild, water-free dry cleaning solvent.

☒ ☒ ☒ ☒ ☐

Testing

Abrasion: ASTM D4157, 100,000 double rubs Wyzenbeek

Note: Abrasion test results exceeding ACT Performance Guidelines are not an indicator of product lifespan.

Multiple factors affect fabric durability and appearance retention.

Flammability: BS 5852 Crib 5*

CAL 117-2013

EN 1021-1*

EN 1021-2*

*passes with additional treatment

Lightfastness: AATCC 16.3, 40+ hours

☐ ☀ ☕ ☑ ☒

Specifications
Inlay
by Hella Jongerius
466353

maharam

Environmental

Greenguard Gold Certified
Contains Bio-Based Content
FR Free

Warranty

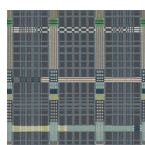
3 years.

© 2016 Maharam

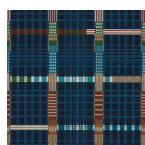
Complete product information at maharam.com
800.645.3943



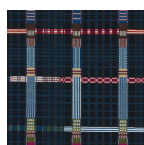
001 Shell



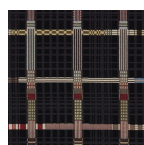
002 Eucalyptus



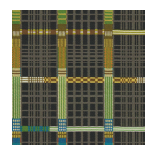
003 Wood



004 Indigo



005 Cacao



006 Fern