

# Specifications

## Multiply

### 466341

**maharam**

#### Application

Seating

Upholstered Walls require additional finishes.

#### Characteristics

Content: 57% Post-Consumer Recycled Polyester, 43% Post-Industrial Recycled Polyester

Finish: Stain Repellent

Additional Finishes Available: Alta, Alta Food and Beverage, Crypton, Nanotex, Nanotex with Impermeable Barrier

Backing: Acrylic

Width: 58" (147cm)

Repeat: 14" V, 7 1/4" H (36cm V, 18cm H)

Railroaded Repeat: 7 1/4" V, 14" H (18cm V, 36cm H)

Bolt Size: 30 yards (27 m)

Weight: 19 oz/ly (589 gr/lm)

Country of Origin: USA

Note: Shown railroaded.

#### Price

\$49.00 / C\$69.75 (FOB destination) / C\$66.25 (FOB origin)

#### Maintenance

W/S/B-Clean with water-based cleanser; mild, water-free dry cleaning solvent, or diluted household bleach.

☒ △ ☒ ☒ W

#### Testing

Abrasion: ASTM D4157, 60,000 double rubs Wyzenbeek

Note: Abrasion test results exceeding ACT Performance Guidelines are not an indicator of product lifespan.

Multiple factors affect fabric durability and appearance retention.

Flammability: AS/NZS 1530.3

AS/NZS 3837 Unadhered

ASTM E 84 Unadhered

CAL 117-2013

CAN ULC S102 Unadhered

EN 13501 Unadhered\*

GB/T 17591\*

ISO 5660 Unadhered

\*passes with additional treatment

Lightfastness: AATCC 16.3, 40+ hours

A ☀️ 🔥 🍷 ☆

## Specifications

Multiply

466341

**maharam**

### Environmental

Greenguard Gold Certified

Contains Recycled Content

FR Free

### Warranty

3 years: Indoor Seating

3 years: Upholstered Walls.

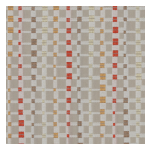
© 2017 Maharam

Complete product information at [maharam.com](http://maharam.com)

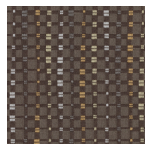
800.645.3943



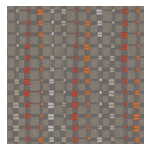
001 Winter



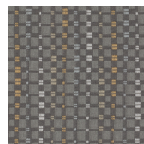
002 Encore



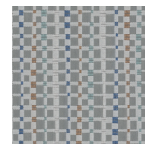
003 Swing



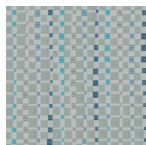
004 Contrast



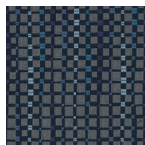
005 Sterling



006 Daze



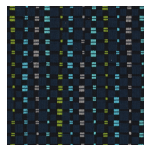
007 Sway



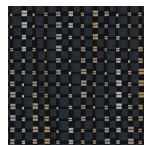
008 Sailor



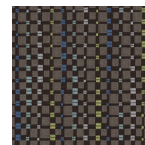
009 Mystique



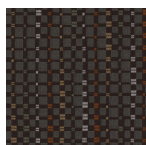
010 Deep



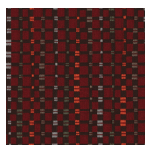
011 Craft



012 Town



013 Limit



014 Tamale