

Specifications

Reef

by Hella Jongerius

466332

maharam

Application

Seating

Note: This textile is available as a made-to-order pillow.

Characteristics

Content: 56% Cotton, 30% Nylon, 14% Post-Consumer Recycled Polyester

Finish: Stain Repellent

Additional Finishes Available: Alta, Alta Food and Beverage, Antimicrobial Stain Resistant Finish with Impermeable Backing, Nanotex, Nanotex with Impermeable Barrier

Backing: Acrylic

Width: 54" (137cm)

Repeat: 32 3/4" V, 13 1/2" H (83cm V, 34cm H)

Railroaded Repeat: 13 1/2" V, 32 3/4" H (34cm V, 83cm H)

Bolt Size: 60 yards (55 m)

Weight: 15.3 oz/ly (474 gr/lm)

Country of Origin: USA

Note: Shown railroaded.

Price

\$120.00 / C\$165.75 (FOB destination) / C\$162.25 (FOB origin)

Maintenance

S-Clean with mild, water-free dry cleaning solvent.

☒ ☒ ☒ ☒ ☐

Testing

Abrasion: ASTM D4157, 150,000 double rubs Wyzenbeek

Note: Abrasion test results exceeding ACT Performance Guidelines are not an indicator of product lifespan.

Multiple factors affect fabric durability and appearance retention.

Flammability: AS/NZS 1530.3

AS/NZS 3837 Unadhered

BS 5852 Crib 5*

CAL 117-2013

EN 1021-1*

EN 1021-2*

ISO 5660 Unadhered

*passes with additional treatment

Lightfastness: AATCC 16.3, 40+ hours

☐ ☀ ☕ ☪ ☼

Specifications
Reef
by Hella Jongerius
466332

maharam

Environmental

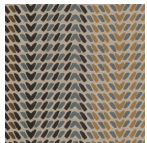
Greenguard Gold Certified
GRS Certified Content
REACH Compliant
Contains Bio-Based Content
Contains Recycled Content
FR Free

Warranty

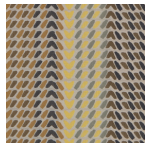
3 years.

© 2016 Maharam

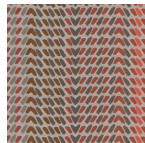
Complete product information at maharam.com
800.645.3943



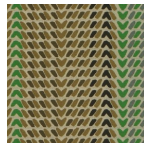
001 Sand



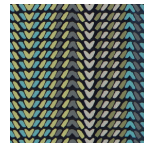
002 Minnow



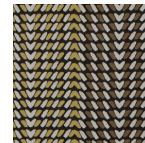
003 Coral



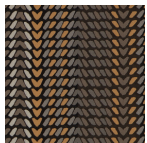
004 Fin



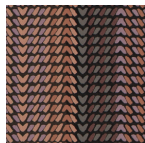
005 Baltic



006 Kelp



007 Herring



008 Shimmer