

Specifications  
Superweave  
by Alexander Girard®, 1966  
466241

**maharam**

**Application**

Seating

Note: This textile is intended for residential use. This textile is available as a made-to-order pillow.

**Characteristics**

Content: 100% Wool

Finish: Stain Repellent

Additional Finishes Available: Alta, Alta Food and Beverage, Nanotex, Nanotex with Impermeable Barrier, PFOA-Free Stain Resistant Finish

Backing: Acrylic

Width: 54" (137cm)

Bolt Size: 22 yards (20 m)

Weight: 26 oz/ly (806 gr/lm)

Country of Origin: Great Britain

**Price**

\$203.00 / C\$262.75 (FOB destination) / C\$259.25 (FOB origin)

**Maintenance**

S-Clean with mild, water-free dry cleaning solvent.



**Testing**

Abrasion: ASTM D4966, 20,000 cycles Martindale

Flammability: CAL 117-2013

NFPA 260

Lightfastness: AATCC 16E, 40+ hours



Specifications  
Superweave  
by Alexander Girard®, 1966  
466241

**maharam**

**Environmental**

Greenguard and Greenguard Gold Certified  
REACH Compliant  
Contains Bio-Based Materials  
Produced in an ISO 14001 Facility  
FR Free

**Brief**

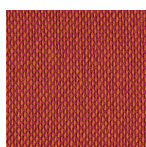
Alexander Girard designed this textile during his tenure as founding director of the Herman Miller Textile Division (1952 to 1973).

**Warranty**

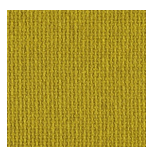
None.

© 2014 Girard Studio, LLC, Maharam under license

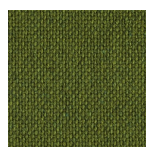
Complete product information at [maharam.com](http://maharam.com)  
800.645.3943



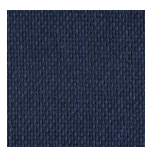
001 Orange and Pink



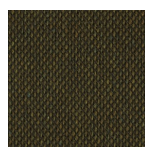
002 Ochre



003 Olive



004 Marine



005 Sienna