

# Specifications

## Pebble Wool Multi

### 461200

**maharam**

#### Application

Seating

Note: This textile is available as a made-to-order pillow.

#### Characteristics

Content: 97% Wool, 3% Nylon

Finish: None

Additional Finishes Available: Alta, Alta Food and Beverage, Nanotex, Nanotex with Impermeable Barrier, Stain Repellent Finish

Backing: None

Width: 54" (137cm)

Bolt Size: 25 yards (23 m)

Weight: 35.5 oz/ly (1101 gr/lm)

Country of Origin: Great Britain

#### Price

\$195.00 / C\$267.25 (FOB destination) / C\$263.75 (FOB origin)

#### Maintenance

S-Clean with mild, water-free dry cleaning solvent.

☒ ☒ ☒ ☒ ☒

#### Testing

Abrasion: ASTM D4966, 100,000 cycles Martindale

Note: Abrasion test results exceeding ACT Performance Guidelines are not an indicator of product lifespan.

Multiple factors affect fabric durability and appearance retention.

Flammability: BS 5852 - PART 1

BS 5852 Crib 5\*

CAL 117-2013

EN 1021-1

EN 1021-2

NFPA 260

\*passes with additional treatment

Lightfastness: AATCC 16.3, 40+ hours

A ☀ 🔥 💧 ☆

# Specifications

## Pebble Wool Multi

### 461200

**maharam**

#### **Environmental**

Greenguard Gold Certified  
Healthier Hospitals Compliant  
LBC Red List Free  
REACH Compliant  
Contains Bio-Based Content  
Produced in an ISO 14001 Facility  
FR Free  
Free of Intentionally Added PFAS

#### **Warranty**

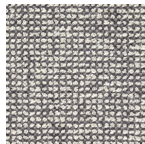
3 years.

© 2002 Maharam

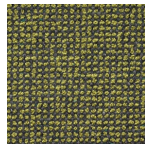
Complete product information at [maharam.com](http://maharam.com)  
800.645.3943



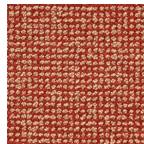
001 Fawn



002 Slate



005 Moss



006 Tabasco