

# Specifications

## Treescape

### 399972

**maharam**

#### Application

Walls

#### Characteristics

Content: 65% Cellulose, 35% Latex

Finish: PFAS-Free Protective Topcoat

Backing: None

Reference Dimension: 10' x 16' 8" (305cm x 508cm)

Customs: Repeatable, Scalable

Country of Origin: USA

Note on Mold: Intended for use in buildings designed and maintained to avoid moisture on or within walls.

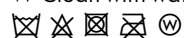
Application must conform to current Installation Guidelines included in each shipment or available at [maharam.com](https://maharam.com).

#### Price

Installation is sized, priced and produced on a project-specific basis

#### Maintenance

W-Clean with water-based cleanser.



#### Testing

Flammability: AS/NZS 3837 Adhered

ASTM E84 Adhered

BS 476 Adhered

CAN ULC S102 Adhered

ISO 5660 Adhered

Lightfastness: AATCC 16.3, 40+ hours



Specifications  
Treescape  
399972

**maharam**

**Environmental**

Greenguard Gold Certified

LBC Red List Free

Contains Bio-Based Content

FR Free

Free of Intentionally Added PFAS

**Brief**

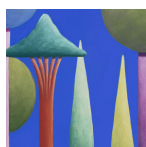
Treescape explores the traditional motif and symbol of trees through stylized depictions in chalk pastel.

**Warranty**

3 years.

© 2017 Nicolas Party, Maharam under license

Complete product information at [maharam.com](https://maharam.com)  
800.645.3943



001