

Specifications

Hitch

399956

maharam

Application

Walls

Characteristics

Content: 100% Non-Phthalate Vinyl

Finish: None

Backing: Polyester / Cellulose

Width: 54" (137cm)

Repeat: Non-match

Bolt Size: 30 yards (27 m)

Class: Type II

Weight: 20 oz/ly (620 gr/lm)

Traffic: High-Suitable for all applications including heavy duty.

Country of Origin: USA

Note on Mold: Intended for use in buildings designed and maintained to avoid moisture on or within walls.

Application must conform to current Installation Guidelines included in each shipment or available at maharam.com.

Price

\$29.00 / C\$42.75 (FOB destination) / C\$39.25 (FOB origin)

A \$3.00/C\$4.00 per yard cutting charge applies to orders under 30 yards.

Maintenance

W/B-Clean with water-based cleanser or diluted household bleach.

☒ △ ☒ ☒ Ⓜ

Testing

Flammability: AS/NZS 3837 Adhered

ASTM E84 Adhered

CAN ULC S102 Adhered

EN 13501 Adhered*

GB 8624 Adhered*

ISO 5660 Adhered

*passes with additional treatment

Lightfastness: AATCC 16.3, 200+ hours

☀ 🔥 💧

Specifications

Hitch

399956

maharam

Environmental

FR Free

Free of Intentionally Added PFAS

Non-Phthalate Vinyl

Warranty

10 years.

© 2017 Maharam

Complete product information at maharam.com

800.645.3943



001 Gilt



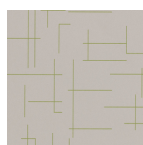
002 Ruffle



003 Beryl



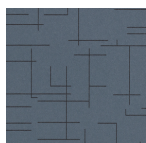
004 Mimosa



005 Moss



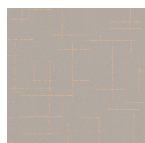
006 Viridian



007 Urban



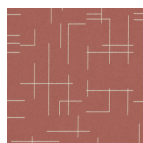
008 Asphalt



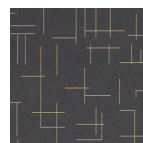
009 Bronzed



010 Toffee



011 Sienna



013 Blackboard