

Specifications

Tussle

399954

maharam

Application

Walls

Characteristics

Content: 90% Thermoplastic Olefin, 10% Post-Industrial Recycled Glass

Finish: PFAS-Free Protective Topcoat

Backing: Polyester / Cellulose

Width: 52" (132cm)

Bolt Size: 30 yards (27 m)

Weight: 18 oz/ly (558 gr/lm)

Traffic: High-Suitable for all applications including heavy duty.

Country of Origin: USA

Note on Mold: Intended for use in buildings designed and maintained to avoid moisture on or within walls.

Application must conform to current Installation Guidelines included in each shipment or available at maharam.com.

Price

\$38.00 / C\$58.00 (FOB destination) / C\$54.50 (FOB origin)

A \$3.00/C\$4.00 per yard cutting charge applies to orders under 30 yards.

Maintenance

W-Clean with water-based cleanser.



Testing

Flammability: ASTM E84 Adhered

Lightfastness: AATCC 16.3, 200+ hours



Specifications
Tussle
399954

maharam

Environmental

Greenguard Gold Certified
Healthier Hospitals Compliant
LBC Red List Free
Contains Recycled Content
FR Free
Free of Intentionally Added PFAS

Warranty

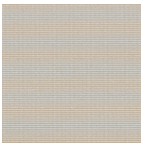
10 years.

© 2017 Maharam

Complete product information at maharam.com
800.645.3943



001 Rye



004 Whisper



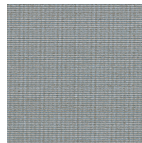
005 Jog



006 Wander



007 Poplar



009 Canal



011 Fade



012 Ostrich



013 Whim



014 Ode



016 Lark