

# Specifications

Dusk

399638

**maharam**

## Application

Walls

## Characteristics

Content: 65% Cellulose, 35% Latex

Finish: PFAS-Free Protective Topcoat

Backing: None

Reference Dimension: 10' x 15' (305cm x 457cm)

Customs: Repeatable, Scalable

Country of Origin: USA

Note on Mold: Intended for use in buildings designed and maintained to avoid moisture on or within walls.

Application must conform to current Installation Guidelines included in each shipment or available at [maharam.com](https://maharam.com).

## Price

Installation is sized, priced and produced on a project-specific basis

## Maintenance

W-Clean with water-based cleanser.

☒ ☒ ☒ ☒ Ⓜ

## Testing

Flammability: AS/NZS 3837 Adhered

ASTM E84 Adhered

CAN ULC S102 Adhered

ISO 5660 Adhered

Lightfastness: AATCC 16.3, 40+ hours

☀️ 🔥 🖨️

## Specifications

Dusk

399638

**maharam**

### Environmental

Greenguard Gold Certified

LBC Red List Free

Contains Bio-Based Content

FR Free

Free of Intentionally Added PFAS

### Brief

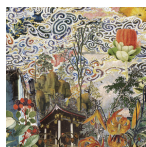
Francesco Simeti is an Italian-born artist based in New York and Sicily who uses mass media images hidden in decorative patterns to point to a darker subtext. Based on Italo Calvino's 1972 novel *Invisible Cities*, Simeti's *Dusk* is a dense cityscape depicting the fantasies and grotesqueries of a modern metropolis layered with overgrown foliage.

### Warranty

3 years.

© 2014 Francesco Simeti, Maharam under license

Complete product information at [maharam.com](http://maharam.com)  
800.645.3943



001