

Specifications
One and One
399627

maharam

Application

Walls

Characteristics

Content: 65% Cellulose, 35% Latex

Finish: PFAS-Free Protective Topcoat

Backing: None

Reference Dimension: 10' x 15' (305cm x 457cm)

Customs: Repeatable

Country of Origin: USA

Note on Mold: Intended for use in buildings designed and maintained to avoid moisture on or within walls.

Application must conform to current Installation Guidelines included in each shipment or available at maharam.com.

Price

Installation is sized, priced and produced on a project-specific basis

Maintenance

W-Clean with water-based cleanser.



Testing

Flammability: AS/NZS 3837 Adhered

ASTM E 84 Adhered

CAN ULC S102 Adhered

ISO 5660 Adhered

Lightfastness: AATCC 16E, 40+ hours



Specifications
One and One
399627

maharam

Environmental

Greenguard Gold Certified
LBC Red List Free
Contains Bio-Based Materials
FR Free
PFAS Free

Brief

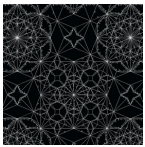
Created with only a ruler and compass in white ink on black-pigmented paper, One and One is part of a series of mathematically precise drawings following the logic of Islamic geometric patterning.

Warranty

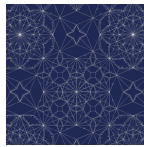
3 years.

© 2013 Timo Nasser, Maharam under license

Complete product information at maharam.com
800.645.3943



001 Black



002 Midnight Blue