

Specifications
Kaleidoscope House (Large)
399464

maharam

Application
Walls

Characteristics

Content: 65% Cellulose, 35% Latex
Finish: PFAS-Free Protective Topcoat
Backing: None
Reference Dimension: 10' x 16' 8" (305cm x 508cm)
Customs: Repeatable
Country of Origin: USA
Note on Mold: Intended for use in buildings designed and maintained to avoid moisture on or within walls.
Application must conform to current Installation Guidelines included in each shipment or available at maharam.com.

Price

Installation is sized, priced and produced on a project-specific basis

Maintenance

W-Clean with water-based cleanser.



Testing

Flammability: AS/NZS 3837 Adhered
ASTM E 84 Adhered
CAN ULC S102 Adhered
ISO 5660 Adhered

Lightfastness: AATCC 16.3, 40+ hours



Specifications

Kaleidoscope House (Large)

399464

maharam

Environmental

Greenguard Gold Certified

LBC Red List Free

Contains Bio-Based Content

FR Free

Free of Intentionally Added PFAS

Brief

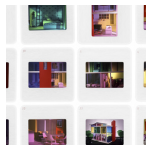
Kaleidoscope House (Large) explores depictions of childhood fantasies and domesticity through hundreds of slides of interiors from a modernist dollhouse designed in 2000 by artist Laurie Simmons and architect Peter Wheelwright.

Warranty

3 years.

© 2010 Laurie Simmons, Maharam under license

Complete product information at maharam.com
800.645.3943



001