

Specifications
Kaleidoscope House (Small)
399455

maharam

Application

Walls

Characteristics

Content: 65% Cellulose, 35% Latex

Finish: PFAS-Free Protective Topcoat

Backing: None

Reference Dimension: 10' x 13' 4" (305cm x 406cm)

Customs: Repeatable, Scalable

Country of Origin: USA

Note on Mold: Intended for use in buildings designed and maintained to avoid moisture on or within walls.

Application must conform to current Installation Guidelines included in each shipment or available at maharam.com.

Price

Installation is sized, priced and produced on a project-specific basis

Maintenance

W-Clean with water-based cleanser.



Testing

Flammability: AS/NZS 3837 Adhered

ASTM E 84 Adhered

CAN ULC S102 Adhered

ISO 5660 Adhered

Lightfastness: AATCC 16.3, 40+ hours



Specifications
Kaleidoscope House (Small)
399455

maharam

Environmental

Greenguard Gold Certified
LBC Red List Free
Contains Bio-Based Content
FR Free
Free of Intentionally Added PFAS

Brief

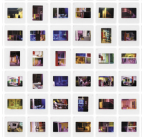
Kaleidoscope House (Small) explores depictions of childhood fantasies and domesticity through hundreds of slides of interiors from a modernist dollhouse designed in 2000 by artist Laurie Simmons and architect Peter Wheelwright.

Warranty

3 years.

© 2010 Laurie Simmons, Maharam under license

Complete product information at maharam.com
800.645.3943



001