

Application

Walls

Characteristics

Content: 90% Thermoplastic Olefin, 10% Post-Industrial Recycled Glass

Finish: None

Backing: Polyester / Cellulose

Width: 52" (132cm)

Repeat: NON-MATCH (), Suitable for non-match application

Bolt Size: 30 yards (27 m)

Weight: 18 oz/ly (558 gr/m)

Traffic: High-Suitable for all applications including heavy duty.

Country of Origin: USA

Price

\$32.00 / C\$46.75 (FOB destination) / C\$43.25 (FOB origin)

Maintenance

W-Clean with water-based cleanser.

☒ ☒ ☒ ☒ ☒

Testing

Flammability: ASTM E84 Adhered

Lightfastness: AATCC 16.3, 200+ hours

☀️ 🔥 🍷 ☆

Specifications

Trust

300115

maharam

Environmental

Greenguard Gold Certified

LBC Red List Free

Contains Recycled Content

FR Free

Free of Intentionally Added PFAS

Warranty

10 years.

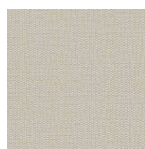
© 2024 Maharam

Complete product information at maharam.com

800.645.3943



001 Flutter



002 Groove



003 Furrow



004 Sway



005 Leap



006 Pirouette



007 Bop



008 Twirl



009 Jump



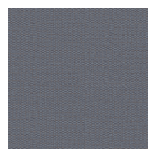
010 Prance



011 Bend



012 Cartwheel



013 Run



014 Dive



015 Backstroke



016 Hike