

# Specifications

Folio

300104

**maharam**

## Application

Walls

## Characteristics

Content: 100% Non-Phthalate Vinyl

Finish: None

Backing: Polyester / Cotton Osnaburg

Width: 54" (137cm)

Repeat: Non-match

Bolt Size: 30 yards (27 m)

Class: Type II

Weight: 20 oz/ly (620 gr/lm)

Traffic: High-Suitable for all applications including heavy duty.

Country of Origin: USA

Note on Mold: Intended for use in buildings designed and maintained to avoid moisture on or within walls.

Application must conform to current Installation Guidelines included in each shipment or available at maharam.com.

## Price

\$30.00 / C\$44.25 (FOB destination) / C\$40.75 (FOB origin)

A \$3.00/C\$4.00 per yard cutting charge applies to orders under 30 yards.

## Maintenance

W/B-Clean with water-based cleanser or diluted household bleach.



## Testing

Flammability: ASTM E84 Adhered

BS 476 Adhered\*

EN 13501 Adhered

GB 8624 Adhered\*

\*passes with additional treatment

Lightfastness: AATCC 16.3, 200+ hours



# Specifications

Folio

300104

**maharam**

## Environmental

FR Free

Free of Intentionally Added PFAS

## Warranty

10 years.

© 2023 Maharam

Complete product information at [maharam.com](https://maharam.com)

800.645.3943



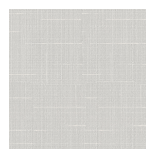
001 Mountaineer



002 Glacial



003 Cloudy



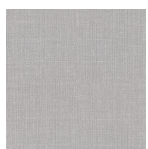
004 Iceward



005 Gentle



006 Shimmy



007 Cosine



008 Pour



009 Fortress



010 Gravitate



011 Crow



012 Darkroom



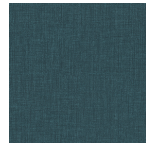
013 Ascendant



014 Psychic



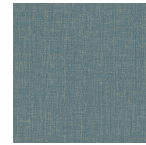
015 Energetic



016 Peacock



017 Rainforest



018 Soothe



019 Exalt



020 Constellation



021 Kiwi



022 Content



023 Granular



024 Equator



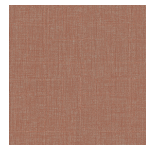
025 Fawn



026 Anima



027 Limbic



028 Cayenne



029 Ignite



030 Confection



031 Paradox



032 Pursue