

Specifications

Loyal
300103

maharam

Application

Walls

Characteristics

Content: 100% Non-Phthalate Vinyl

Finish: PFAS-Free Protective Topcoat

Backing: Polyester / Cotton Osnaburg

Width: 54" (137cm)

Repeat: Non-match

Bolt Size: 30 yards (27 m)

Class: Type II

Weight: 20 oz/ly (620 gr/lm)

Traffic: High-Suitable for all applications including heavy duty.

Country of Origin: USA

Note on Mold: Intended for use in buildings designed and maintained to avoid moisture on or within walls.

Application must conform to current Installation Guidelines included in each shipment or available at maharam.com.

Price

\$33.00 / C\$50.75 (FOB destination) / C\$47.25 (FOB origin)

A \$3.00/C\$4.00 per yard cutting charge applies to orders under 30 yards.

Maintenance

W/B-Clean with water-based cleanser or diluted household bleach.

☒ △ ☒ ☒ Ⓜ

Testing

Flammability: ASTM E84 Adhered

BS 476 Adhered*

CAN ULC S102 Adhered

EN 13501 Adhered

GB 8624 Adhered*

*passes with additional treatment

Lightfastness: AATCC 16.3, 200+ hours

☀ 🔥 🍷

Specifications

Loyal

300103

maharam

Environmental

FR Free

Free of Intentionally Added PFAS

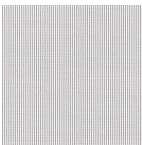
Warranty

10 years.

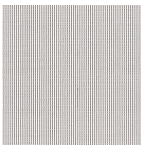
© 2023 Maharam

Complete product information at maharam.com

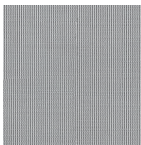
800.645.3943



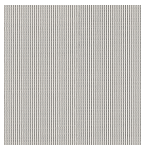
001 Antarctic



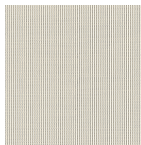
002 Chill



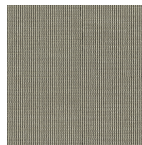
003 Perception



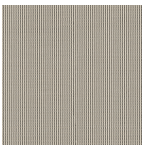
004 Mirror



005 Coherent



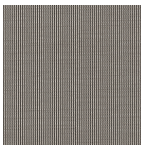
006 Parallax



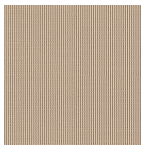
007 Ladder



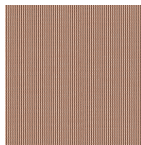
008 Stereo



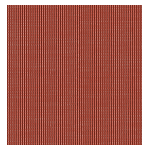
009 Glimmer



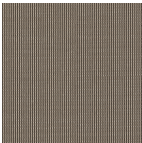
010 Farro



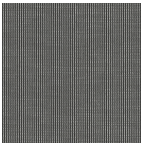
011 Darling



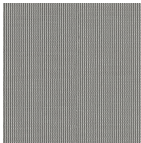
012 Inferno



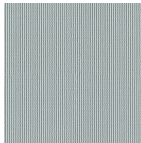
013 Robotic



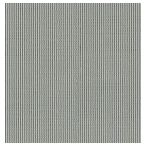
014 Ponder



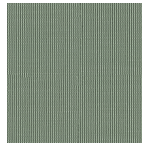
015 Homespun



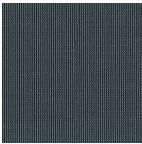
016 Seaglass



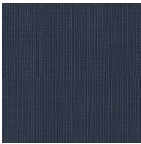
017 Emotive



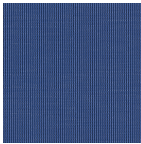
018 Sanctuary



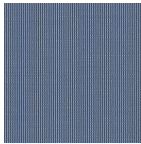
019 Journey



020 Rise



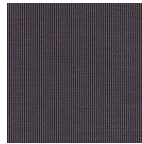
021 Teardrop



022 Swim



023 Labyrinth



024 Reckon