

# Specifications

Cesta

300061

**maharam**

## Application

Walls

## Characteristics

Content: 100% Non-Phthalate Vinyl

Finish: None

Backing: Polyester / Cotton Osnaburg

Width: 54" (137cm)

Repeat: Non-match

Bolt Size: 30 yards (27 m)

Class: Type II

Weight: 20 oz/ly (620 gr/lm)

Traffic: High-Suitable for all applications including heavy duty.

Country of Origin: USA

Note on Mold: Intended for use in buildings designed and maintained to avoid moisture on or within walls.

Application must conform to current Installation Guidelines included in each shipment or available at maharam.com.

## Price

\$31.00 / C\$45.50 (FOB destination) / C\$42.00 (FOB origin)

A \$3.00/C\$4.00 per yard cutting charge applies to orders under 30 yards.

## Maintenance

W/B-Clean with water-based cleanser or diluted household bleach.

☒ △ ☒ ☒ Ⓜ

## Testing

Flammability: AS/NZS 3837 Adhered

ASTM E84 Adhered

BS 476 Adhered\*

CAN ULC S102 Adhered

EN 13501 Adhered\*

GB 8624 Adhered\*

\*passes with additional treatment

Lightfastness: AATCC 16.3, + hours



# Specifications

Cesta

300061

**maharam**

## Environmental

FR Free

Free of Intentionally Added PFAS

Non-Phthalate Vinyl

## Warranty

10 years.

© 2020 Maharam

Complete product information at [maharam.com](http://maharam.com)

800.645.3943



001 Sash



002 Icehouse



003 Cauliflower



004 Loft



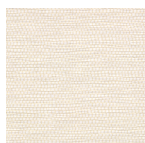
005 Bakery



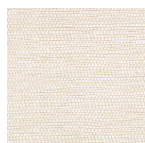
006 Plateau



007 Hornet



008 Heatwave



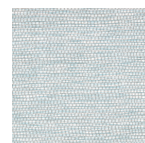
009 Bubbly



010 Sugarcane



011 Scrimshaw



012 Wellspring



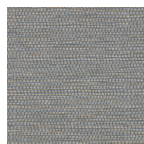
013 Brinicle



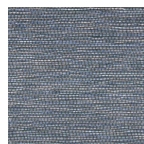
014 Wintertime



015 Verse



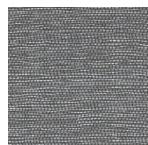
016 Caravel



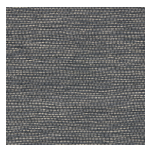
017 Evening



018 Azalea



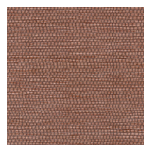
019 Hardware



020 Jackpot



021 Rooibos



022 Glassblowing