

Specifications
Instant Photo
300060

maharam

Application

Walls

Characteristics

Content: 65% Cellulose, 35% Latex

Finish: Protective Topcoat

Backing: None

Reference Dimension: 10' x 16' 8" (305cm x 508cm)

Customs: Repeatable, Scalable

Country of Origin: USA

Note on Mold: Intended for use in buildings designed and maintained to avoid moisture on or within walls.

Application must conform to current Installation Guidelines included in each shipment or available at maharam.com.

Price

Installation is sized, priced and produced on a project-specific basis

Maintenance

W-Clean with water-based cleanser.

☒ ☒ ☒ ☒ ☒

Testing

Flammability: CAN ULC S102 Adhered

☀ ☑ ☑

Specifications
Instant Photo
300060

maharam

Environmental

Greenguard Gold Certified
LBC Red List Free
Contains Bio-Based Materials
FR Free
PFAS Free

Brief

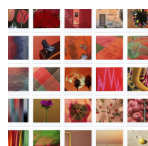
Depicting over 600 images from Paul Smith's personal collection of photographs, Instant Photo features an array of objects, environments, and surfaces that speaks to Smith's passion for collecting while commenting on the relevance of instant photography in today's hyper-documented world.

Warranty

3 years.

© 2019 Paul Smith, Maharam under license

Complete product information at maharam.com
800.645.3943



001