

Specifications

Burst

300053

maharam

Application

Walls

Characteristics

Content: 100% Cellulose

Finish: None

Backing: 84% Polyester, 16% Post-Consumer Recycled Polyester

Width: 52" (132cm)

Repeat: 19 1/2" V, 26" H (50cm V, 66cm H)

Bolt Size: 30 yards (27 m)

Weight: 8.5 oz/ly (264 gr/lm)

Traffic: Moderate-Suitable for heavy duty applications with the exception of high traffic corridors.

Country of Origin: USA

Note: This product is available in custom colors for a minimum of 30 yards.

Note on Mold: Intended for use in buildings designed and maintained to avoid moisture on or within walls.

Application must conform to current Installation Guidelines included in each shipment or available at maharam.com.

Price

\$61.00 / C\$86.00 (FOB destination) / C\$82.50 (FOB origin)

A \$3.00/C\$4.00 per yard cutting charge applies to orders under 30 yards.

Maintenance

W-Clean with water-based cleanser.



Testing

Flammability: AS/NZS 3837 Adhered

ASTM E84 Adhered

CAN ULC S102 Adhered

EN 13501 Adhered*

ISO 5660 Adhered

*passes with additional treatment

Lightfastness: AATCC 16.3, 40+ hours



Specifications

Burst

300053

maharam

Environmental

Greenguard Gold Certified

Healthier Hospitals Compliant

LBC Red List Free

Contains Bio-Based Content

FR Free

Free of Intentionally Added PFAS

Warranty

3 years.

© 2019 Maharam

Complete product information at maharam.com

800.645.3943



001 Esplanade



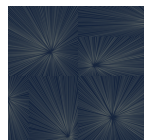
002 Kasha



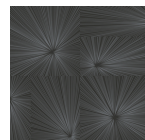
003 Lather



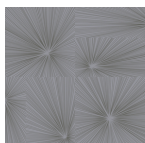
004 Seafrost



005 Mesosphere



006 Nighthawk



007 Melody



008 Snowball