

# Specifications

Grano  
200060

**maharam**

## Application

Floors

## Characteristics

Content: 100% Wool

Construction: Tufted

Backing: Latex / Polypropylene

Maximum Width: 14' 9" (450cm)

Alternate Shapes: Other

Size variation: +/- 5%

Height: 3/4" (20mm)

Weight: 13.1 oz/sq ft (4000 g/sq m)

Traffic: Low-Suitable for private office and residential applications. Not appropriate for stairways, corridors, or public waiting areas.

Country of Origin: Netherlands

Note: Variations in color and texture are inherent to this textile.

## Price

\$101.00 / C\$136.50 per square foot (FOB origin)

## Maintenance

X-Vacuum or brush lightly to remove surface dust.



## Testing

Flammability: ASTM D2859 / CPSC FF 1-70 / FF 2-70, 16 CFR 1630

## Specifications

Grano

200060

**maharam**

### Environmental

LBC Red List Free

Contains Bio-Based Content

FR Free

Free of Intentionally Added PFAS

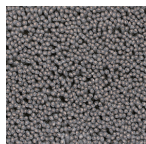
### Warranty

2 years.

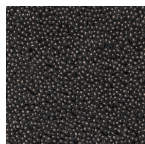
© 2014 Maharam

Complete product information at [maharam.com](http://maharam.com)

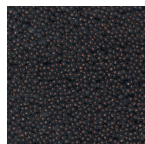
800.645.3943



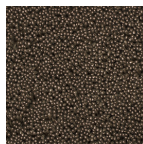
121



181



781



881