

Specifications
Merger by Hella Jongerius
650051

maharam

Application

Floors

Characteristics

Content: 80% Wool, 20% Cotton

Construction: Handwoven

Backing: None

Maximum Width: 13' 2" (400cm)

Maximum Length: 32' 10" (1000cm)

Size variation: +/- 5%

Height: ¼" (7mm)

Weight: 5.6 oz/sq ft (1700 g/sq m)

Traffic: Moderate-Suitable for most applications with the exception of high traffic stairways, corridors, public waiting areas, or for use with casters.

Country of Origin: India

Note: Variations in color and texture are inherent to this textile.

Price

\$69.50 / C\$94.00 per square foot (FOB origin)

Maintenance

X-Vacuum or brush lightly to remove surface dust.



Testing

Flammability: ASTM D2859 / CPSC FF 1-70 / FF 2-70, 16 CFR 1630

ASTM E648 / NFPA 253 OVER RUG PAD THIN

Specifications
Merger by Hella Jongerius
650051

maharam

Environmental

LBC Red List Free
Contains Bio-Based Content
Produced in an ISO 14001 Facility
FR Free
Free of Intentionally Added PFAS

Warranty

2 years.

© 2017 Maharam

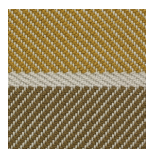
Complete product information at maharam.com
800.645.3943



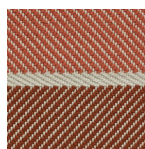
111



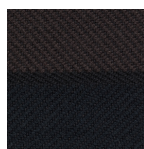
161



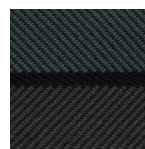
451



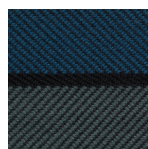
591



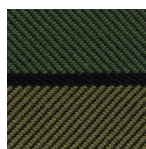
721



771



791



951