

Specifications

Lana

650040

maharam

Application

Floors

Characteristics

Content: 80% Wool, 11% Polyester, 9% Jute

Construction: Woven

Backing: Polyester, Latex

Maximum Width: 12' (366cm)

Maximum Length: 164' 1" (5000cm)

Alternate Shapes: Circle, Oval, Other

Size variation: +/- 5%

Height: 3/8" (8mm)

Bolt Size: 55 yards (50 m)

Weight: 10.5 oz/sq ft (3200 g/sq m)

Traffic: High-Suitable for all heavy duty applications with the exception of stairways and corridors.

Country of Origin: Guatemala

Note: Variations in color and texture are inherent to this textile.

Price

\$128.50 / C\$173.75 per square foot (FOB origin)

Maintenance

X-Vacuum or brush lightly to remove surface dust.



Testing

Flammability: ASTM D 2859 / CPSC FF 1-70 / FF 2-70, 16 CFR 1630

Lightfastness: AATCC 16E, 40+ hours

Specifications

Lana

650040

maharam

Environmental

LBC Red List Free

Contains Bio-Based Materials

FR Free

PFAS Free

Warranty

2 years.

© 2017 Maharam

Complete product information at maharam.com

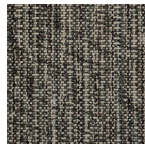
800.645.3943



001 Gale



002 Cobble



003 Camo