

Specifications
Cross Cut by Hella Jongerius
650024

maharam

Application

Floors

Characteristics

Content: 60% Wool, 40% Rayon

Construction: Tufted

Backing: Wool/Acrylic/Latex

Maximum Width: 13' 2" (400cm)

Maximum Length: 32' 10" (1000cm)

Size variation: +/- 5%

Height: 5/8" (15mm)

Weight: 7.2 oz/sq ft (2200 g/sq m)

Maintenance: X-Vacuum or brush lightly to remove surface dust.

Traffic: Low-Suitable for private office and residential applications. Not appropriate for stairways, corridors, or public waiting areas.

Country of Origin: India

Note: Variations in color and texture are inherent to this textile. Slight variations in pattern are inherent to this textile.

Price

\$73.00 / C\$96.25 per square foot (FOB origin)

Performance

Flammability: This textile meets all appropriate flammability requirements for floors. See flame certificate for test results.

Environmental

Contains Bio-Based Materials

PFC-Free

Warranty

2 years.

© 2016 Maharam

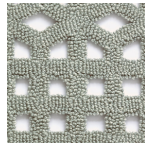
Complete product information at maharam.com
800.645.3943



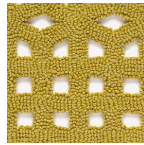
150



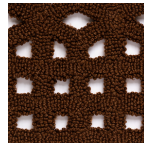
190



210



410



470