

## Specifications

Fringe

650015

**maharam**

### Application

Floors

### Characteristics

Content: 100% Wool

Construction: Handwoven

Backing: None

Maximum Width: 13' 2" (400cm)

Maximum Length: 32' 10" (1000cm)

Size variation: +/- 5%

Height: ¼" (5mm)

Weight: 4.6 oz/sq ft (1400 g/sq m)

Traffic: Moderate-Suitable for most applications with the exception of high traffic stairways, corridors, public waiting areas, or for use with casters.

Country of Origin: India

Note: Variations in color and texture are inherent to this textile.

### Price

\$66.50 / C\$90.00 per square foot (FOB origin)

### Maintenance

X-Vacuum or brush lightly to remove surface dust.

☒ ☒ ☒ ☒ ☒

### Testing

Flammability: ASTM D2859 / CPSC FF 1-70 / FF 2-70, 16 CFR 1630

ASTM E648 / NFPA 253 OVER RUG PAD THIN

ASTM E648/NFPA 253

## Specifications

Fringe  
650015

**maharam**

### Environmental

LBC Red List Free

Contains Bio-Based Content

FR Free

Free of Intentionally Added PFAS

### Warranty

2 years.

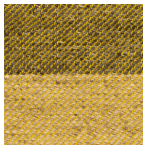
© 2015 Maharam

Complete product information at [maharam.com](http://maharam.com)

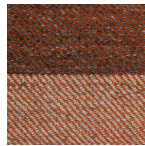
800.645.3943



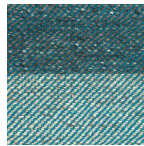
192



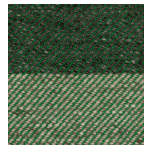
422



622



722



922