

Specifications  
Inlay  
by Hella Jongerius  
466353

**maharam**

**Application**

Seating

Note: This textile is available as a made-to-order pillow.

**Characteristics**

Content: 80% Cotton, 20% Solution-Dyed Nylon

Finish: Stain Repellent

Additional Finishes Available: Alta, Alta Food and Beverage, Nanotex, Nanotex with Impermeable Barrier

Backing: Acrylic

Width: 52" (132cm)

Repeat: 8" V, 27 1/4" H (20cm V, 69cm H)

Bolt Size: 30 yards (27 m)

Weight: 19.3 oz/ly (599 gr/lm)

Country of Origin: USA

**Price**

\$135.00 / C\$196.50 (FOB destination) / C\$193.00 (FOB origin)

**Maintenance**

S-Clean with mild, water-free dry cleaning solvent.

**Testing**

Abrasion: ASTM D4157, 100,000 double rubs Wyzenbeek

Note: Abrasion test results exceeding ACT Performance Guidelines are not an indicator of product lifespan.

Multiple factors affect fabric durability and appearance retention.

Flammability: BS 5852 Crib 5\*

CAL 117-2013

EN 1021-1\*

EN 1021-2\*

\*passes with additional treatment

Lightfastness: AATCC 16.3, 40+ hours

Specifications  
Inlay  
by Hella Jongerius  
466353

**maharam**

**Environmental**

Greenguard Gold Certified  
Contains Bio-Based Content  
FR Free

**Warranty**

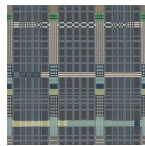
3 years.

© 2016 Maharam

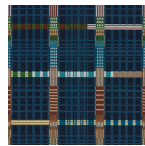
Complete product information at [maharam.com](http://maharam.com)  
800.645.3943



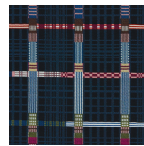
001 Shell



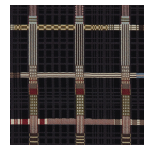
002 Eucalyptus



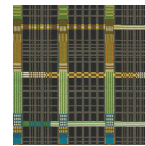
003 Wood



004 Indigo



005 Cacao



006 Fern