

# Specifications

## Lift

### by Konstantin Grcic

#### 466302

**maharam**

#### Application

Seating, Upholstered Walls

Note: This textile is available as a made-to-order pillow.

#### Characteristics

Content: 100% Polyester

Finish: None

Backing: None

Width: 54" (137cm)

Repeat: 9" V (23cm V)

Railroaded Repeat: 9" H (23cm H)

Bolt Size: 25 yards (23 m)

Weight: 23.8 oz/ly (738 gr/lm)

Country of Origin: Taiwan

Note: Shown railroaded.

#### Price

\$96.00 / C\$143.50 (FOB destination) / C\$137.25 (FOB origin)

#### Maintenance

S-Clean with mild, water-free dry cleaning solvent.

☒ ☒ ☒ ☒ ☒

#### Testing

Abrasion: ASTM D4157, 100,000 double rubs Wyzenbeek

Note: Abrasion test results exceeding ACT Performance Guidelines are not an indicator of product lifespan.

Multiple factors affect fabric durability and appearance retention.

Acoustics: ASTM C423, 0.85 NRC

Flammability: ASTM E84 Unadhered

BS 5852 Crib 5\*

CAL 117-2013

EN 1021-1

EN 1021-2

\*passes with additional treatment

Lightfastness: AATCC 16.3, 40+ hours

☒ ☒ ☒ ☒ ☒

Specifications  
Lift  
by Konstantin Grcic  
466302

**maharam**

**Environmental**

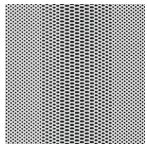
Greenguard Gold Certified  
Healthier Hospitals Compliant  
LBC Red List Free  
REACH Compliant  
FR Free  
Free of Intentionally Added PFAS

**Warranty**

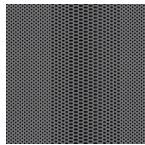
3 years: Indoor Seating  
3 years: Upholstered Walls.

© 2016 Maharam

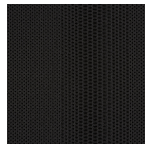
Complete product information at [maharam.com](http://maharam.com)  
800.645.3943



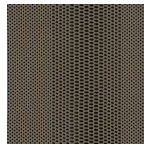
001 Chalk



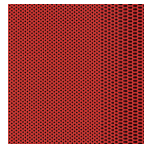
002 Cinder



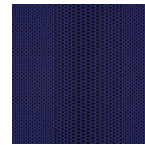
003 Jet



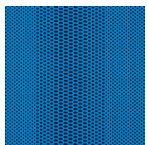
004 Bind



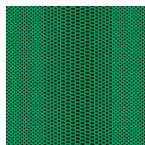
005 Engine



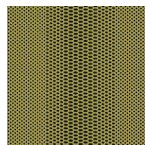
006 Verge



007 Morph



008 Turf



009 Track