

# Specifications

Divide

466220

**maharam**

## Application

Seating, Upholstered Walls

## Characteristics

Content: 45% Polyester, 36% Post-Industrial Recycled Polyester, 19% Post-Consumer Recycled Polyester

Finish: Stain Repellent

Additional Finishes Available: Alta, Alta Food and Beverage, Antimicrobial Stain Resistant Finish with Impermeable Backing, Crypton, Nanotex, Nanotex with Impermeable Barrier, PFOA-Free Stain Resistant Finish

Backing: Acrylic

Width: 57" (145cm)

Repeat: 2 1/4" V, 3" H (6cm V, 8cm H)

Bolt Size: 60 yards (55 m)

Weight: 12.8 oz/ly (397 gr/lm)

Country of Origin: USA

## Price

\$42.00 / C\$57.50 (FOB destination) / C\$54.00 (FOB origin)

## Maintenance

W/S/B-Clean with water-based cleanser; mild, water-free dry cleaning solvent, or diluted household bleach.



## Testing

Abrasion: ASTM D4157, 60,000 double rubs Wyzenbeek

Note: Abrasion test results exceeding ACT Performance Guidelines are not an indicator of product lifespan.

Multiple factors affect fabric durability and appearance retention.

Flammability: AS/NZS 1530.3

ASTM E 84 Unadhered

CAL 117-2013

CAN ULC S102 Unadhered

EN 13501 Unadhered\*

GB/T 17591\*

NFPA 260

\*passes with additional treatment

Lightfastness: AATCC 16E, 40+ hours



# Specifications

Divide

466220

**maharam**

## Environmental

Greenguard and Greenguard Gold Certified

Contains Recycled Content

FR Free

## Warranty

5 years: Indoor Seating

3 years: Upholstered Walls.

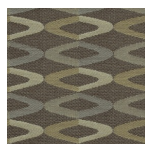
© 2014 Maharam

Complete product information at [maharam.com](http://maharam.com)

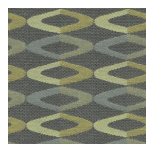
800.645.3943



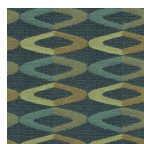
001 Ecrú



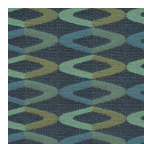
002 Café



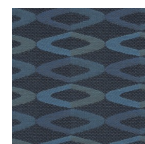
003 Concrete



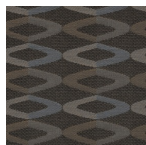
004 Forest



005 Tropic



006 Lagoon



007 Mocha