

Specifications
Colorwheel
by Hella Jongerius
466163

maharam

Application

Seating

Note: This textile is available as a made-to-order pillow.

Characteristics

Content: 62% Cotton, 38% Solution-Dyed Post-Industrial Recycled Nylon

Finish: Stain Repellent

Additional Finishes Available: Alta, Alta Food and Beverage, Antimicrobial Stain Resistant Finish with Impermeable Backing, Crypton, Nanotex, Nanotex with Impermeable Barrier

Backing: Acrylic

Width: 54" (137cm)

Repeat: 15" V, 14" H (38cm V, 36cm H)

Bolt Size: 55 yards (50 m)

Weight: 16.6 oz/ly (515 gr/lm)

Country of Origin: USA

Price

\$89.00 / C\$116.75 (FOB destination) / C\$113.25 (FOB origin)

Maintenance

S-Clean with mild, water-free dry cleaning solvent.



Testing

Abrasion: ASTM D4157, 100,000 double rubs Wyzenbeek

Note: Abrasion test results exceeding ACT Performance Guidelines are not an indicator of product lifespan.

Multiple factors affect fabric durability and appearance retention.

Flammability: CAL 117-2013

NFPA 260

Lightfastness: AATCC 16E, 40+ hours



Specifications
Colorwheel
by Hella Jongerius
466163

maharam

Environmental

Greenguard and Greenguard Gold Certified
REACH Compliant
Contains Bio-Based Materials
Contains Recycled Content
FR Free

Warranty

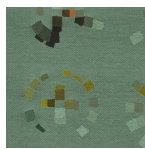
3 years.

© 2013 Maharam

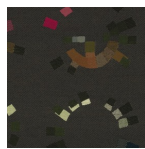
Complete product information at maharam.com
800.645.3943



002 Pumice



003 Viridian



006 Charcoal



007 Carbon