

# Specifications

## Borders

by Hella Jongerius  
466082

**maharam**

### Application

Seating

Note: This textile is intended for residential use. This textile is available as a made-to-order pillow. Although pattern passes flammability, please be advised that the wool content in this product tends to absorb moisture. Puddling, sagging, and shrinkage at the seams can occur if the installation is not 24/7 climate controlled. There can also be issues with shading as this pattern is piece dyed.

### Characteristics

Content: 98% Wool, 2% Polyester

Finish: None

Additional Finishes Available: Alta, Nanotex, Stain Repellent Finish

Backing: None

Width: 53" (135cm)

Repeat: 29 1/4" V, 53" H (74cm V, 135cm H)

Bolt Size: 44 yards (40 m)

Weight: 20 oz/ly (619 gr/lm)

Country of Origin: Belgium

### Price

\$445.00 / C\$639.25 (FOB destination) / C\$635.75 (FOB origin)

### Maintenance

S-Clean with mild, water-free dry cleaning solvent.



### Testing

Abrasion: ASTM D4966, 15,000 cycles Martindale

Flammability: ASTM E84 Unadhered\*

BS 5852 Crib 5\*

CAL 117-2013

EN 1021-1

EN 1021-2

NFPA 260

\*passes with additional treatment

Lightfastness: AATCC 16.3, 40+ hours



Specifications  
Borders  
by Hella Jongerius  
466082

**maharam**

**Environmental**

Greenguard Gold Certified  
Healthier Hospitals Compliant  
LBC Red List Free  
REACH Compliant  
Contains Bio-Based Content  
FR Free  
Free of Intentionally Added PFAS

**Warranty**

None.

© 2011 Maharam

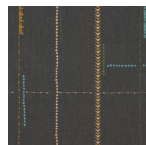
Complete product information at [maharam.com](http://maharam.com)  
800.645.3943



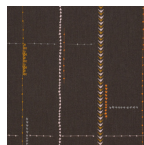
001 Natural



002 Greige



003 Charcoal



004 Walnut