

# Specifications

## Exchange

### 466027

**maharam**

#### Application

Seating, Upholstered Walls

#### Characteristics

Content: 52% Post-Industrial Recycled Polyester, 48% Post-Consumer Recycled Polyester

Finish: Stain Repellent

Additional Finishes Available: Alta, Alta Food and Beverage, Antimicrobial Stain Resistant Finish with Impermeable Backing, Crypton, Nanotex, Nanotex with Impermeable Barrier

Backing: None

Width: 57" (145cm)

Repeat: 5" V, 7" H (13cm V, 18cm H), Suitable for non-match application

Bolt Size: 60 yards (55 m)

Weight: 15.4 oz/ly (476 gr/lm)

Country of Origin: USA

#### Price

\$45.00 / C\$61.50 (FOB destination) / C\$58.00 (FOB origin)

#### Maintenance

W/S/B-Clean with water-based cleanser; mild, water-free dry cleaning solvent, or diluted household bleach.

☒ △ ☒ ☒ Ⓜ

#### Testing

Abrasion: ASTM D4157, 60,000 double rubs Wyzenbeek

Note: Abrasion test results exceeding ACT Performance Guidelines are not an indicator of product lifespan. Multiple factors affect fabric durability and appearance retention.

Flammability: ASTM E 84 Unadhered

CAL 117-2013

EN 13501 Unadhered\*

NFPA 260

\*passes with additional treatment

Lightfastness: AATCC 16E, 40+ hours

☐ ☀ 🔥 💧 ☆



Specifications  
Exchange  
466027

**maharam**

**Environmental**

Greenguard and Greenguard Gold Certified

Contains Recycled Content

FR Free

**Warranty**

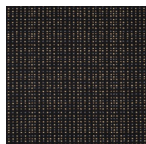
5 years: Indoor Seating

3 years: Upholstered Walls.

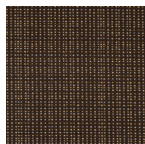
© 2010 Maharam

Complete product information at [maharam.com](http://maharam.com)

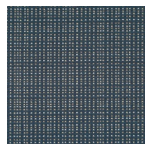
800.645.3943



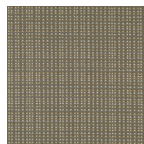
001 Cinder



002 Sable



004 Gull



007 Clay



008 Buck