

Specifications
Layers Park Double
by Hella Jongerius
465919

maharam

Application

Seating

Note: This textile is available as a made-to-order pillow.

Characteristics

Content: 96% Wool, 3% Nylon, 1% Polyester

Finish: None

Additional Finishes Available: Stain Repellent Finish

Backing: None

Width: 52" (132cm)

Repeat: 29 ¼" V, 17" H (74cm V, 43cm H)

Bolt Size: 22 yards (20 m)

Weight: 32.3 oz/ly (1002 gr/lm)

Country of Origin: Great Britain

Price

\$464.00 / C\$666.50 (FOB destination) / C\$663.00 (FOB origin)

Maintenance

S-Clean with mild, water-free dry cleaning solvent.

☒ ☒ ☒ ☒ Ⓟ

Testing

Abrasion: ASTM D4966, 20,000 cycles Martindale

Flammability: AS/NZS 3837 Unadhered

CAL 117-2013

EN 1021-1

EN 1021-2

NFPA 260

Lightfastness: AATCC 16.3, 40+ hours

☐ ☀ 🔥 💧 ☆

Specifications
Layers Park Double
by Hella Jongerius
465919

maharam

Environmental

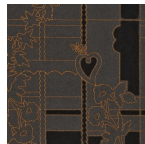
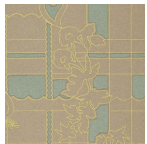
Eu Ecolabel Certified
Greenguard Gold Certified
Healthier Hospitals Compliant
LBC Red List Free
REACH Compliant
Contains Bio-Based Content
FR Free
Free of Intentionally Added PFAS

Warranty

3 years.

© 2008 Maharam

Complete product information at maharam.com
800.645.3943



001 Mineral/Taupe/Lemon 002 Sienna/Ginger/Rose 003 Black/Peat/Copper