

Specifications

Balustrade

463120

maharam

Application

Seating

Characteristics

Content: 51% Polyester, 33% Cotton, 16% Rayon

Finish: Stain Repellent

Additional Finishes Available: Alta, Alta Food and Beverage, Antimicrobial Stain Resistant Finish with Impermeable Backing, Crypton, Nanotex, Nanotex with Impermeable Barrier

Backing: Acrylic

Width: 54" (137cm)

Repeat: 20 3/4" V, 13 3/4" H (53cm V, 35cm H)

Bolt Size: 60 yards (55 m)

Weight: 12.1 oz/ly (375 gr/lm)

Country of Origin: USA

Price

\$64.00 / C\$87.75 (FOB destination) / C\$84.25 (FOB origin)

Maintenance

S-Clean with mild, water-free dry cleaning solvent.

☒ ☒ ☒ ☒ Ⓟ

Testing

Abrasion: ASTM D4157, 60,000 double rubs Wyzenbeek

Flammability: BS 5852 Crib 5*

CAL 117-2013

EN 1021-1*

NFPA 260

*passes with additional treatment

Lightfastness: AATCC 16E, 40+ hours

☒ ☀ ☹ ☹ ☹

Specifications

Balustrade

463120

maharam

Environmental

Greenguard and Greenguard Gold Certified

Contains Bio-Based Materials

FR Free

Warranty

3 years.

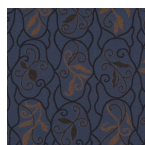
© 2003 Maharam

Complete product information at maharam.com

800.645.3943



001 Breeze



009 Marine